

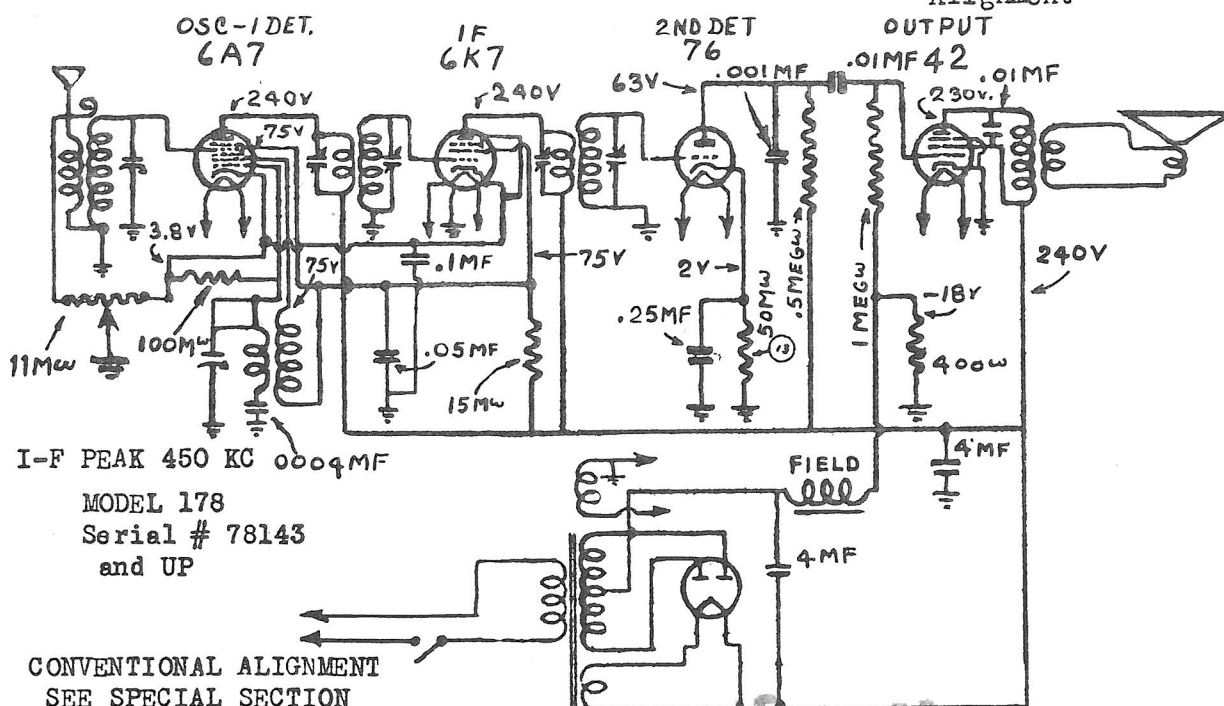
RADIO PRODUCTS SALES CO.

MODELS 140, 170 Clipper

MODEL 178 Clipper

Schematics, Voltage

Alignment

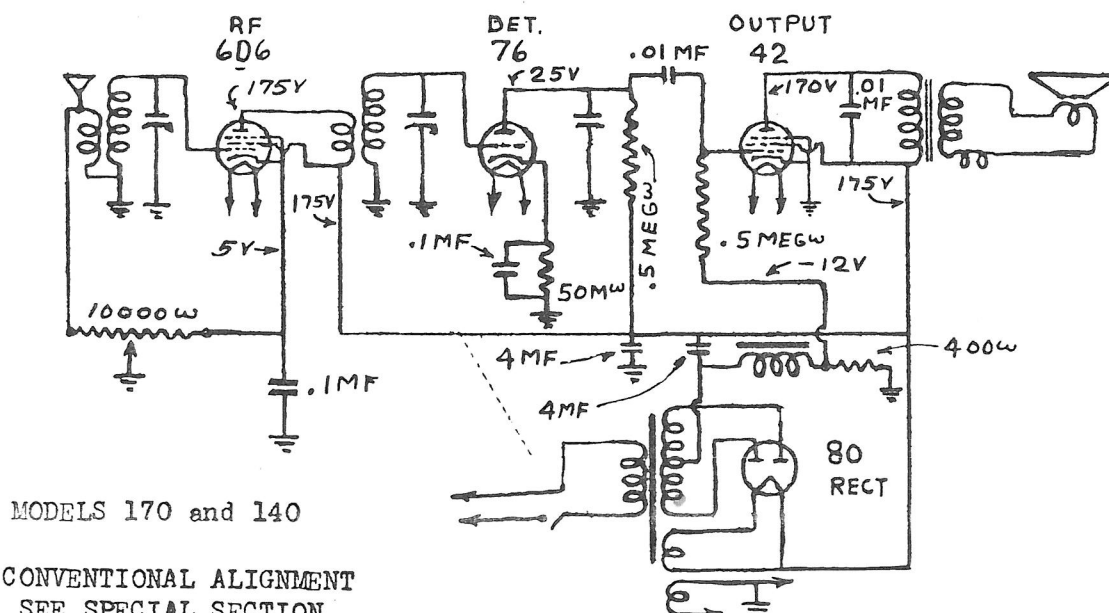


Align the I-F transformer trimmers at 450 KC.

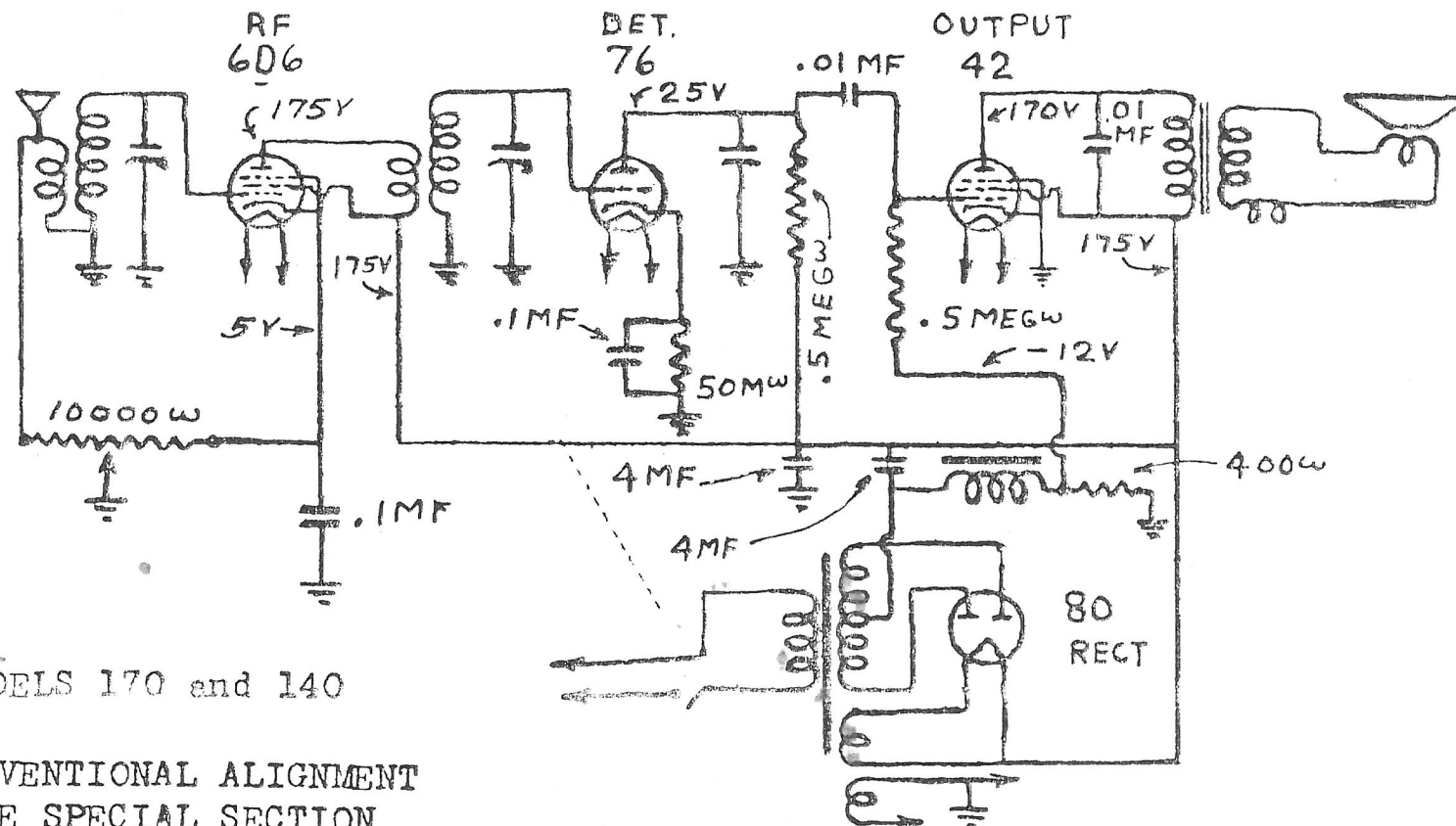
Generator set to 1400 KC, align the rear trimmer of the variable condenser to a maximum peak. (Oscillator section)

Generator at the same frequency, align the front trimmer of the variable condenser to maximum peak. (Antenna trimmer)

No padding is required for the Oscillator circuit.



The generator is connected to the antenna of the receiver and set to 1400 KC. The trimmer of the front section of the variable condenser is then adjusted to maximum peak. The rear trimmer of the variable condenser (ANT) is next peaked to maximum.



MODELS 170 and 140

CONVENTIONAL ALIGNMENT
SEE SPECIAL SECTION

The generator is connected to the antenna of the receiver and set to 1400 KC. The trimmer of the front section of the variable condenser is then adjusted to maximum peak. The rear trimmer of the variable condenser (ANT) is next peaked to maximum.