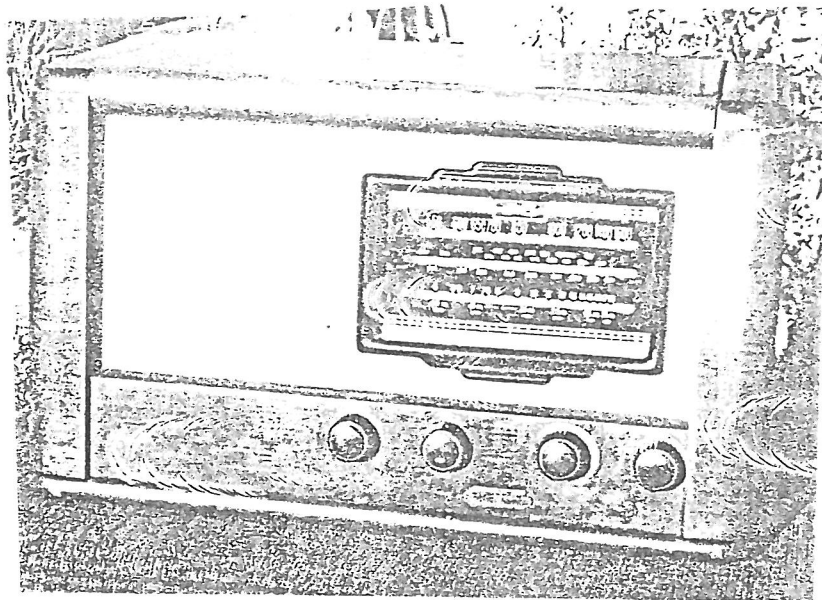


RW



Golden Knight 6-tube DW
chassis RW (883) 1948-1949



add. c2



For The Serviceman

ALIGNMENT AND CALIBRATION PROCEDURE 6-VALVE DUALWAVE MODEL R.W.

I.F. Alignment:

This month we present two circuits, for the Ultimate 6-valve Dualwave 1948 Model R.W., and the Philips Model 461. Below are alignment instructions for the former.

A signal generator modulated 30 per cent. at 400 c.p.s. is coupled between the control grid of the 7A8 frequency changer and ground, by means of a 1 μ f. condenser.

I.F. cores should be adjusted in the following order: Diode core, 7A8 plate core, 7A8 grid core, and 7A7 grid core. The adjustment is made for maximum output at 460 kc/s.

An input of 30 microvolts should produce an output of 50 milliwatts.

Calibration:

Broadcast.—Adjust 1400 kc. point with trimmer T_6 and 600 kc. point with padder T_7 . Adjust 1000 kc. point by means of iron core 3. Intermediate points should be checked and oscillator section of gang condenser fanned to correct frequency.

Shortwave.—Adjust 17 mc/s. point with trimmer T_5 and 6.5 mc/s. point by fanning shortwave oscillator if broadcast calibration has been accurate.

R.F. Alignment:

Broadcast.—The signal generator is coupled to the antenna coil by means of a standard dummy antenna. Adjust for maximum output the 17 mc/s. point with trimmers T_2 and T_4 , and the 600 kc/s. point by means of iron cores 1 and 2.

If calibration has been accurate, the 1000 kc/s. point should be in alignment. Check intermediate points and connect by fanning detector and antenna sections of gang condenser.

Shortwave.—Adjust for maximum output 17 mc/s. with trimmers T_1 and T_3 . Adjust 6.5 mc/s. point by fanning detector and antenna coil inductances.

Power Transformers for Transmitting Requirements

These transformers are tapped to deliver D.C. voltages of 1250v, 1000v, and 750v, using 866A rectifiers. Swinging chokes are available for this use in the capacities listed below. All high tension terminals are ceramic insulated.



CHOKES INSULATED FOR USE WITH ABOVE POWER TRANSFORMERS

Cat. No.	150 ma. Smoothing	16 Hen.	160 ohms	49 C 20	250 ma. Swinging	12 Hen.	100 ohms
49 C 17	150 ma. Smoothing	16 Hen.	160 ohms	48 C 10	350 ma. Smoothing		85 ohms
49 C 18	150 ma. Swinging		160 ohms	48 C 13	350 ma. Swinging		85 ohms
49 C 19	250 ma. Smoothing	14 Hen.	100 ohms				

866A FILAMENT TRANSFORMERS

Cat. No.	230/2.5v. C.T.	10 amps.	2500v. D.C. wkg.	48 F 07	230/2.5v. C.T.	10 amps.	4000v. D.C. wkg.
48 F 06	230/2.5v. C.T.	10 amps.	2500v. D.C. wkg.				

TABLE SHOWING PHYSICAL DIMENSIONS

Cat. No.	Height	Breadth	Depth	Mtg. Centres	Approx. Weight
48 P 01 ..	8 in.*	5 in.	3 1/2 in.	3 1/2 in. x 1 1/2 in.	14 lb.
48 P 02 ..	5 1/2 in.	10 1/2 in.*	7 in.	5 1/2 in. x 6 in.	34 lb.
48 P 03 ..	6 1/2 in.	11 1/2 in.*	8 1/2 in.	5 1/2 in. x 6 1/2 in.	46 lb.
49 C 17 ..	5 1/2 in.	4 1/2 in.	5 1/2 in.	3 in. x 5 in.	8 lb.
49 C 18 ..	5 1/2 in.	4 1/2 in.	5 1/2 in.	3 in. x 5 in.	8 lb.
49 C 19 ..	5 1/2 in.	6 in.	5 1/2 in.	3 in. x 6 in.	11 1/2 lb.
49 C 20 ..	5 1/2 in.	6 in.	5 1/2 in.	3 in. x 6 in.	11 1/2 lb.
48 C 10 ..	5 1/2 in.	6 in.	5 1/2 in.	3 in. x 6 in.	11 1/2 lb.
48 C 13 ..	5 1/2 in.*	4 1/2 in.	3 1/2 in.	1 13/16 in. x 1 1/2 in.	11 1/2 lb.
48 F 06 ..	5 1/2 in.*	4 1/2 in.	4 in.	3 1/2 in. x 3 in.	11 1/2 lb.
48 F 07 ..	5 1/2 in.†	4 1/2 in.	4 in.		

*Includes measurements over terminals.
†Terminals project through bottom of can.

BEACON RADIO LIMITED

32 FANSHAW STREET, AUCKLAND, C.1

MANUFACTURERS OF DRIVER AND MODULATION TRANSFORMERS, Etc.

If you are not served by one of the Wholesale Distributors mentioned below, please get in touch with us direct.

WELLINGTON
Green & Cooper Ltd.,
43 Lower Taranaki St.,
WELLINGTON

TARANAKI
J. B. MacEwan & Co., Ltd.,
King Street,
NEW PLYMOUTH

OTAGO
R. H. Gardner,
42 Crawford St.,
DUNEDIN